

Livermore Airway Business Park

L I V E R M O R E , C A L I F O R N I A



290 Lindbergh Ave.

Project 5
6,380+/- sq.ft.

**Light
Industrial /
Warehouse
Space for
Lease**

- Convenient I-580/Airway Blvd. Freeway Accessibility
- On-Site Property Management
- Approx. 6,380+/- s.f.
- 3/1,000 Parking
- Tenant Controlled HVAC
- Sprinklered & Insulated
- (1) 12' x 14' Grade Level & (1) 12' x 16' Dock High Roll-Up Door
- 18'-20' Interior Clearance
- 110/208V, 200 amps of 3-Phase Power
- Nearby Tenant Services include, Hotels, Restaurants, Wineries, Golf Courses, a Tower-Controlled Airport, and 24 Hr. Fitness
- Comcast & AT&T Availability

For Information Contact:

Jennifer Walker / Rebecca Rad

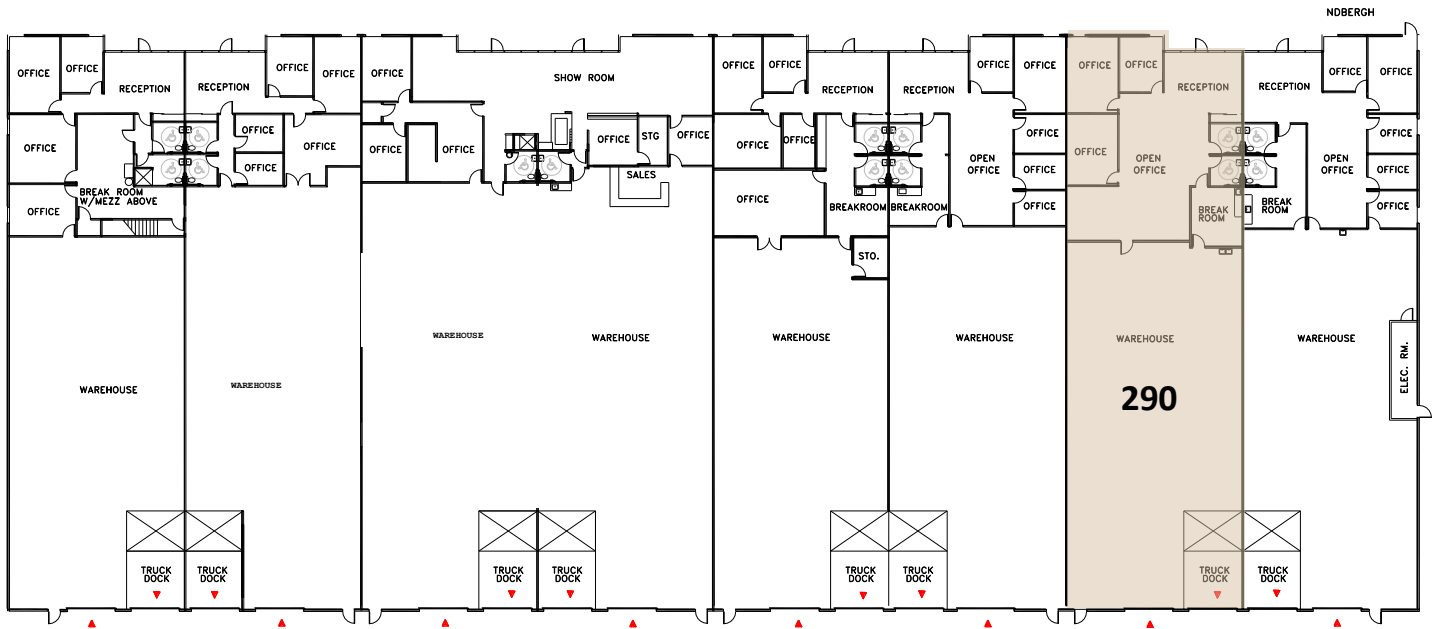
Phone 925 455 1234 • Fax 925 455 1546
email: jwalker@tjrinc.com / rrad@tjrinc.com
website: www.tjrinc.com

2600 Kitty Hawk Road, Suite 100, Livermore, California 94551

Project 5 – 290 Lindbergh Ave.

L I V E R M O R E , C A L I F O R N I A

Building Floor Plan

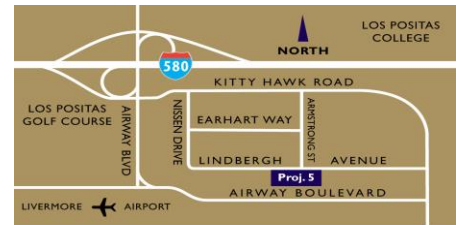


(Floor plan accuracy not warranted and may be changed or updated without notice.)

Available Space

- 290 Lindbergh Ave. – 6,380+/- s.f. - \$1.35 s.f. Ind. Gross + CAM

(Quoted rates are for spaces AS-IS. Rates, terms, and availability subject to change or withdrawal without notice.)



Map

For Information Contact:

Jennifer Walker / Rebecca Rad

Phone 925 455 1234 • Fax 925 455 1546
email: jwalker@tjrinc.com / rrad@tjrinc.com
website: www.tjrinc.com

2600 Kitty Hawk Road, Suite 100, Livermore, California 94551

