

# Livermore Airway Business Park

TERRENCE J. ROSE, INC.  
REAL ESTATE

INVESTMENT & DEVELOPMENT

L I V E R M O R E , C A L I F O R N I A



2600 Kitty Hawk Rd., Suite 107

## Project 1 Building 1

1,900+/- sq. ft.

## Office Space for Lease

- Convenient I-580/Airway Blvd. Freeway Accessibility
- On-Site Property Management
- Unit Size: 1,900+/- s.f.
- Full Service Lease
- 4/1,000 Parking
- Glass Topped Atrium
- Oak Trim Interiors
- Tenant Controlled HVAC
- Shower Facilities
- Nearby Tenant Services, Restaurants, Wineries, Golf Courses, Tower-Controlled Airport, 24 Hr. Fitness
- Comcast & AT&T Availability

For Information Contact:

**Jennifer Walker / Susan Handelin**

Phone 925 455 1234 • Fax 925 455 1546

Email: [jwalker@tjinc.com](mailto:jwalker@tjinc.com) / [shandelin@tjinc.com](mailto:shandelin@tjinc.com)

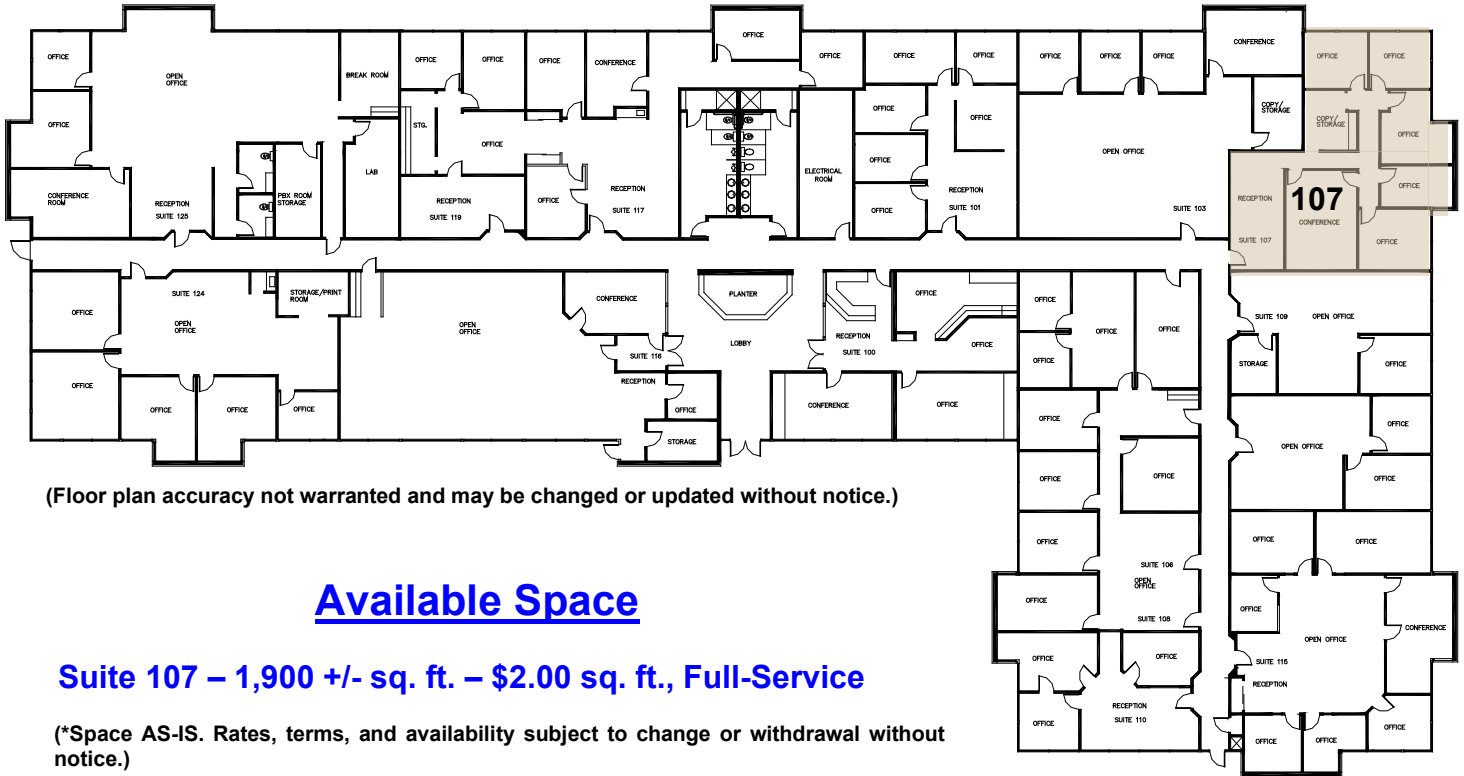
Website: [www.tjinc.com](http://www.tjinc.com)

2600 Kitty Hawk Road, Suite 100, Livermore, California 94551

# Project 1 – Building 1 – 2600 Kitty Hawk Rd.

L I V E R M O R E , C A L I F O R N I A

## Floor Plan



(Floor plan accuracy not warranted and may be changed or updated without notice.)

## Available Space

**Suite 107 – 1,900 +/- sq. ft. – \$2.00 sq. ft., Full-Service**

(\*Space AS-IS. Rates, terms, and availability subject to change or withdrawal without notice.)

## Map



MAP NOT TO SCALE



For Information Contact:

**Jennifer Walker / Susan Handelin**

Phone 925 455 1234 • Fax 925 455 1546

Email: [jwalker@tjrinc.com](mailto:jwalker@tjrinc.com) / [shandelin@tjrinc.com](mailto:shandelin@tjrinc.com)

Website: [www.tjrinc.com](http://www.tjrinc.com)

2600 Kitty Hawk Road, Suite 100, Livermore, California 94551