

# Livermore Airway Business Park

TERRENCE J. ROSE, INC.  
REAL ESTATE

INVESTMENT & DEVELOPMENT

L I V E R M O R E , C A L I F O R N I A



## 2600 Kitty Hawk Rd., Suite 117

### Project 1 Building 1

2,083+/- sq. ft.

### Office Space for Lease

- Convenient I-580/Hwy 84 Accessibility
- On-Site Property Management Office
- Unit Size: 2,083+/- s.f.
- Full Service Lease
- 8 Parking Stalls Included
- Alarmed and Secured Building
- Comcast & AT&T Availability
- Tenant Controlled HVAC
- Shower Facilities
- Nearby Restaurants, Wineries, Golf Course, Tower-Controlled Airport, and Gyms
- Chargepoint Charging Stations Within Walking Distance

For Information Contact:

**Jennifer Walker**

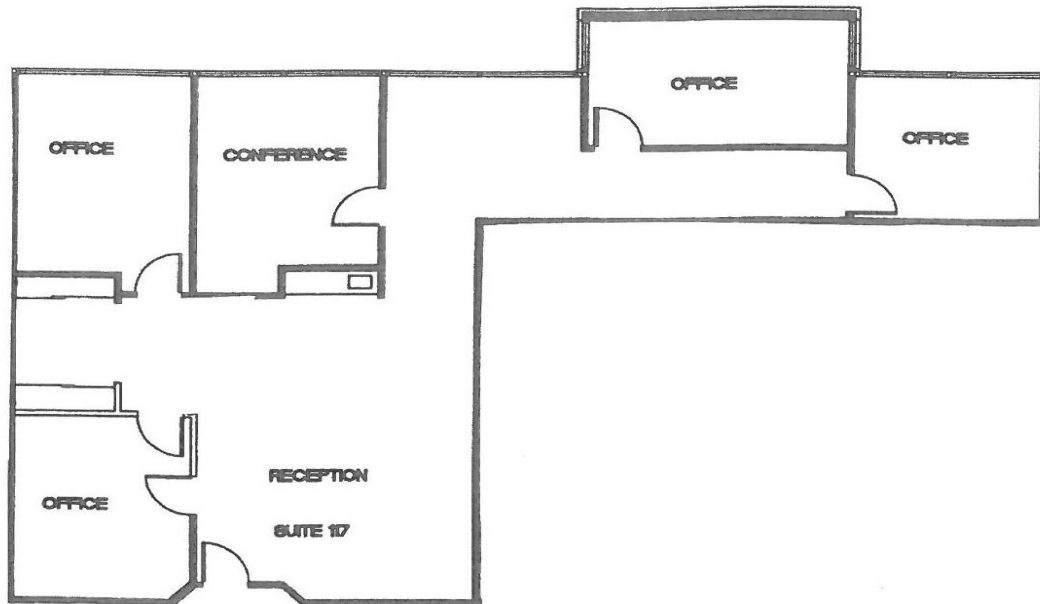
Phone 925 455 1234 • Fax 925 455 1546

Email: [propertymanager@tjrinc.com](mailto:propertymanager@tjrinc.com) • Website: [www.tjrinc.com](http://www.tjrinc.com)  
2600 Kitty Hawk Road, Suite 100, Livermore, California 94551

# Project 1 – Building 1 – 2600 Kitty Hawk Rd

L I V E R M O R E , C A L I F O R N I A

## Floor Plan

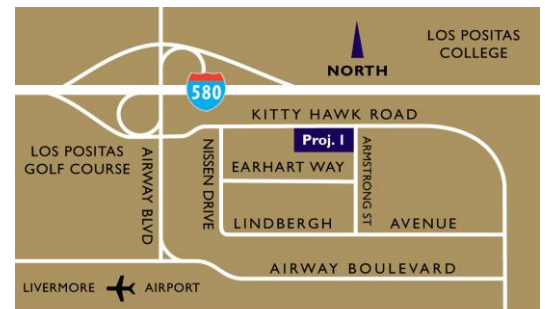


## Available Space

**Suite 117 – 2,083 +/- sq. ft. – \$2.00 sq. ft. Full-Service**

(\*Space AS-IS. Rates, terms, and availability subject to change or withdrawal without notice.)

## Map



MAP NOT TO SCALE



For Information Contact:

**Jennifer Walker**

Phone 925 455 1234 • Fax 925 455 1546

Email: [propertymanager@tjrinc.com](mailto:propertymanager@tjrinc.com) • Website: [www.tjrinc.com](http://www.tjrinc.com)  
2600 Kitty Hawk Road, Suite 100, Livermore, California 94551