

Livermore Airway Business Park

L I V E R M O R E , C A L I F O R N I A



470 Lindbergh Ave.

**Project 11
Building 2
2,000+/- Sq. Ft.**

**Light
Industrial /
Office Space
For Lease**

- Convenient I-580/Airway Blvd. Freeway Accessibility
- Local Property Management
- 2,000+/- Sq. Ft.
- 3/1,000 Parking
- Tenant Controlled HVAC
- Comcast & AT&T Availability
- Nearby Yard Availability
- 10' x 12' Grade Level Roll-Up Door
- 15' Interior Clearance
- Sprinklered & Insulated
- 110/208v, 3-Phase Power
- Nearby Tenant Services, Restaurants, Wineries, Golf Courses, Tower-Controlled Airport, and 24 Hr. Fitness

For Information Contact:

Jennifer Walker / Laurie Smith

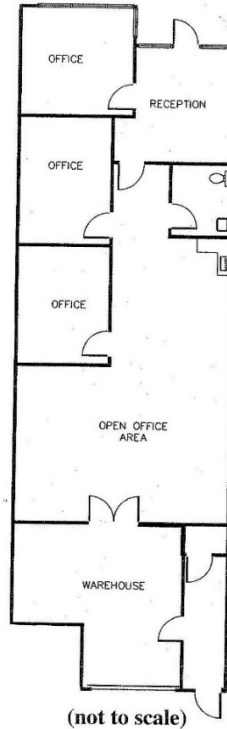
Phone 925 455 1234 • Fax 925 455 1546
E-mail: jwalker@tjrinc.com / lsmith@tjrinc.com
www.tjrinc.com

2600 Kitty Hawk Road, Suite 100, Livermore, California 94551

Project 11 – Building 2 – 470 Lindbergh Ave.

L I V E R M O R E , C A L I F O R N I A

Floor Plan - 2,000+/- Sq. Ft.



(Floor plan accuracy not warranted and may be changed or updated without

Available Space

470 Lindbergh Avenue – 2,000+/- Sq. Ft. - \$1.55/Sq. Ft., IG + CAM

MAP



TERRENCE J. ROSE, INC.
REAL ESTATE

INVESTMENT & DEVELOPMENT

For Information Contact:

Jennifer Walker / Laurie Smith

Phone 925 455 1234 • Fax 925 455 1546

E-mail: jwalker@tjrinc.com / lsmith@tjrinc.com

www.tjrinc.com