

Livermore Airway Business Park

L I V E R M O R E , C A L I F O R N I A



492 Lindbergh Ave.

Project 11
Building 1
1,944+/- Sq. Ft.

**Light
Industrial /
Office Space
for Lease**

- Convenient I-580/Airway Blvd. Freeway Accessibility
- Local Property Management
- Unit Size 1,944+/- Sq. Ft.
- 3/1,000 Parking
- Nearby Yard Availability
- Tenant Controlled HVAC
- Comcast & AT&T Availability
- 10' x 12' Grade Level Roll-Up Door
- 15' Interior Clearance
- Sprinklered & Insulated
- 110/208v, 3-Phase Power
- Nearby Tenant Services, Restaurants, Wineries, Golf Courses, Tower-Controlled Airport, 24 Hour Fitness

For Information Contact:

Jennifer Walker / Laurie Smith

Phone 925 455 1234 • Fax 925 455 1546

E-Mail: jwalker@tjrinc.com / lsmith@tjrinc.com

www.tjrinc.com

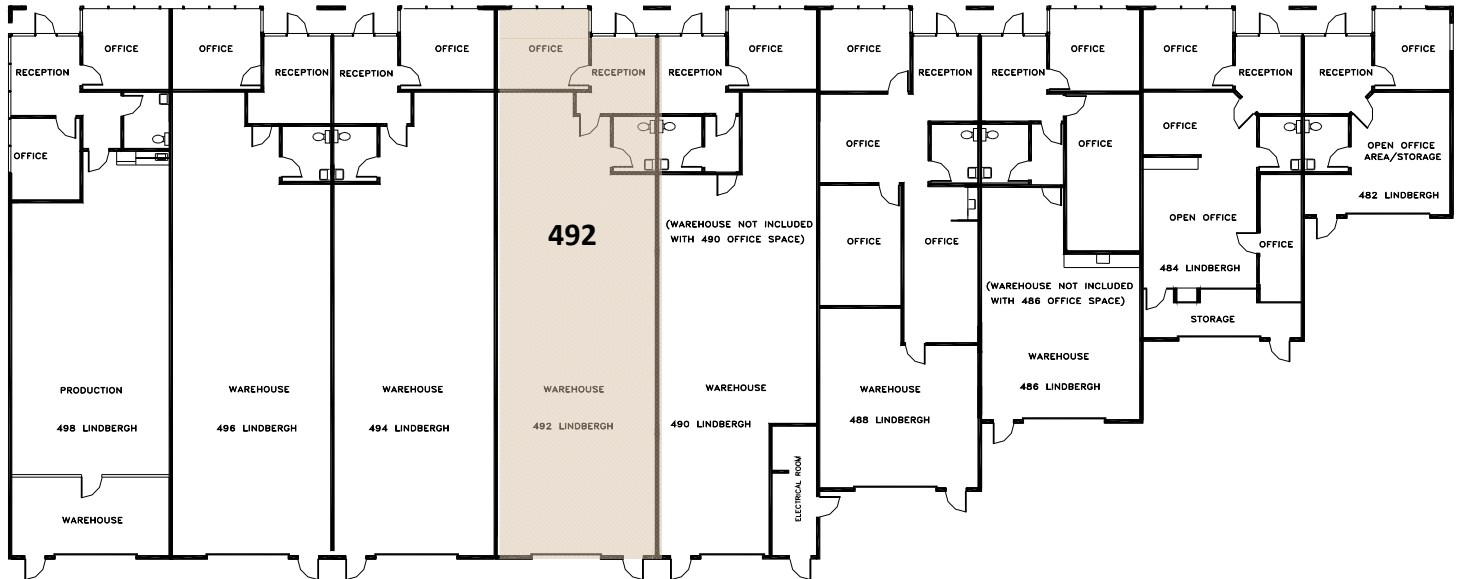
2600 Kitty Hawk Road, Suite 100, Livermore, California 94551

Project 11 – Building 1 – 492 Lindbergh Ave.

L I V E R M O R E , C A L I F O R N I A

Building Floor Plan

1,944+/- Sq. Ft.



(Floor plan accuracy not warranted and may be changed or updated without notice.)

Available Space

**492 Lindbergh Ave. – 1,944+/- Sq. Ft. - \$1.55/Sq. Ft., IG, plus CAM
(Available July 2024)**

(Quoted rates are for spaces AS-IS. Rates, terms, and availability subject to change or withdrawal without notice.)

Map



TERRENCE J. ROSE, INC.
REAL ESTATE

INVESTMENT & DEVELOPMENT

For Information Contact:

Jennifer Walker / Laurie Smith

Phone 925 455 1234 • Fax 925 455 1546

E-Mail: jwalker@tjinc.com / lsmith@tjinc.com

www.tjinc.com

2600 Kitty Hawk Road, Suite 100, Livermore, California 94551